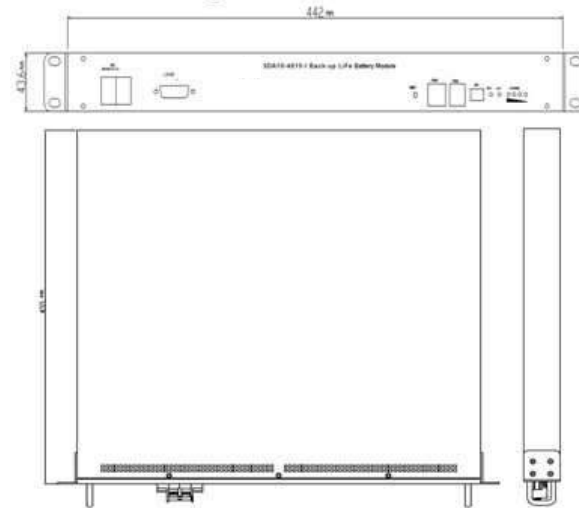


## SDA 10-4810-I Lithium iron phosphate (LFP) battery



Three view drawing:



### Brief Introduction:

SDA10-4810-I LFP battery system is a high-tech product, it's manufactured and developed successfully by Innovative Energies, The product is mainly used in backup power of telecommunication field. It's AC in, DC out.

### Attain certificate:

ISO9001(03012Q10124R3M),ISO14001(03011E108R2M),GB/T28001(03012S10050R0M),CE,UL,ROHS,TUV.

### Production features:

- 1、 Battery's positive pole using LiFePO<sub>4</sub> material with high cycling life and good security feature ;
- 2、 The battery system using high performance battery management system(BMS) the BMS have current, voltage, temperature protect function ;
- 3、 Automatic Management of charging and discharging , supervi sion unit automatically measure the batteries' charging and discharging current, and management the batteries' float charge and boost charge ;
- 4、 Small in volume and light in weight, reduce about 50% (compared with LA Battery) ;
- 5、 The battery system has a good electromagnetic compatibility ;
- 6、 It also can communication with the remote central control center ;
- 7、 Configuration flexible : multi modules can be parallel connected to last long the back up time ;
- 8、 Excellent high temperature performance, and air condition is unnecessary when the ambient temperature is less than +40 °C , which can save energy.

### Basic parameter:

| model        | Rated voltage (v) | Rated capacity(Ah) | overall dimension (mm)            | weight(kg) |
|--------------|-------------------|--------------------|-----------------------------------|------------|
| SDA10-4810-I | 48                | 10                 | 442 (wide) x44 (high) x455 (deep) | About 12.5 |

### Charging parameter:

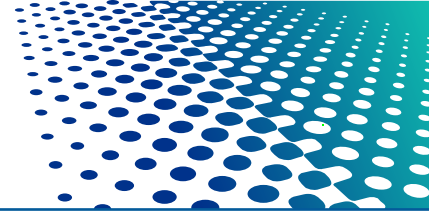
| model        | charging voltage(Vac) | charging current(Aac) |
|--------------|-----------------------|-----------------------|
| SDA10-4810-I | 220                   | 1                     |

### Discharging parameter:

| model        | Discharging voltage(DCV) | Discharging current(A) |
|--------------|--------------------------|------------------------|
| SDA10-4810-I | 40 ~56.4                 | <3                     |

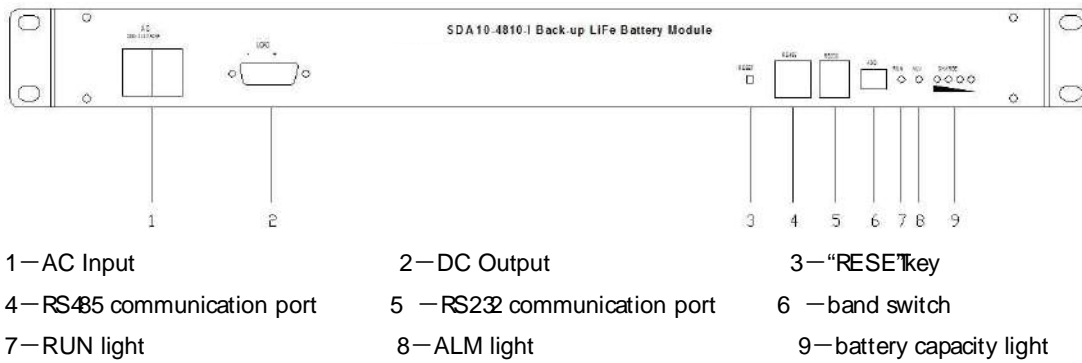
### Using environment:

| number | items                   | qualification | unit | remarks                    |
|--------|-------------------------|---------------|------|----------------------------|
| 1      | Charging temperature    | -10~+55       | °C   | Suggestion tem : -5 ~+50°C |
| 2      | Discharging temperature | -10~+55       | °C   |                            |



|   |                   |  |    |   |
|---|-------------------|--|----|---|
| 3 | Store temperature | -25~+70  | °C | $\leq +30^{\circ}\text{C} @ \leq 6$ months<br>$\leq +45^{\circ}\text{C} @ \leq 3$ months<br>$> 45^{\circ}\text{C} @ \leq 1$ month |
| 4 | relative humidity | 5~95   | %  | No condensation , battery system normally working   |
| 5 | height            | 4000   | m  | if altitude above 2000m, the max working temperature decrease $1^{\circ}\text{C}$ every 200m.can't higher than 4000m              |
| 6 | environment       | Using in no electric conduction dust and corrode gas place |    |   |

**SDA 10-4810-I LFP lithium communication battery panel instruction:**



**Working principle diagram:**

