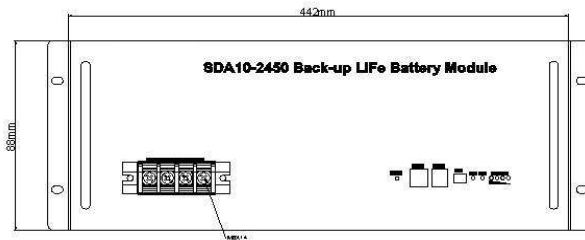


## SDA 10-2450 Lithium iron phosphate (LFP) battery

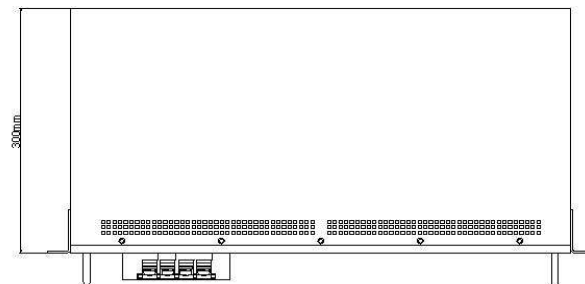


### Brief Introduction:

LFP battery system is a high-tech product, it's manufactured and developed successfully by Innovative Energies. The product is mainly used in backup power of telecommunication field. It can support used in parallel.

### Attain certificate:

ISO9001(03012Q10124R3M),ISO14001(03011E108R2M),GB/T28001(03012S10050R0M),CE,UL,ROHS,TUV.



### Production features:

- 1、 Battery's positive pole using LiFePO<sub>4</sub> material with high cycling life and good security feature ;
- 2、 The battery system using high performance battery management system(BMS), the BMS have current, voltage, temperature protect function ;
- 3、 Automatic Management of charging and discharging , supervision unit automatically measure the batteries' charging and discharging current, and management the batteries' float charge and boost charge ;
- 4、 Small in volume and light in weight, reduce about 50% (compared with LA Battery) ;
- 5、 The battery system has a good electromagnetic compatibility ;
- 6、 It also can communication with the remote central control center ;
- 7、 Configuration flexible : multi modules can be parallel connected to last long the back up time ;
- 8、 Excellent high temperature performance, and air condition is unnecessary when the ambient temperature is less than +40°C , which can save energy.

### Basic parameter:

model	Rated voltage (v)	Rated capacity(Ah)	overall dimension (mm)	weight(kg)
SDA10-2450	24	50	442 (wide) x88 (high) x300 (deep)	About 15.5

### Charging parameter:

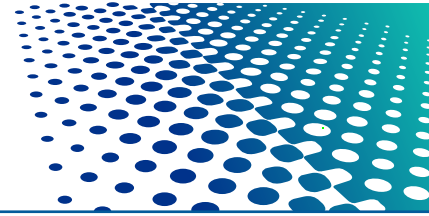
model	Charging voltage(DCV)		Charging current(A)
	Float voltage(DCV)	Boost voltage(DCV)	
SDA10-2450	28 ~29 ( suggest 28.5)	29.2 ~30.8 ( suggest 30.4)	Charging current limit 5

### Discharging parameter:

model	Discharging voltage(DCV)	Discharging current(A)
SDA10-2450	20 ~30.8	≤ 50

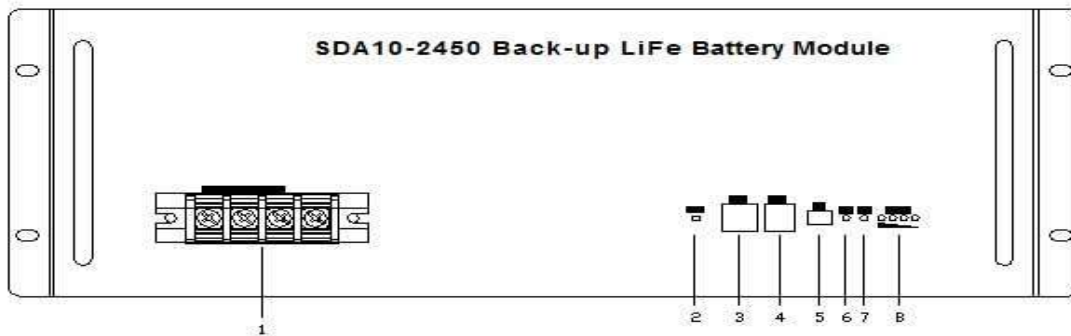
### Using environment:

number	items	qualification	unit	remarks
1	Charging temperature	-20~+65	°C	Suggestion tem : -15 ~+50°C
2	Discharging temperature	-20~+65	°C	



number	items	qualification	unit	remarks
3	Store temperature	-30 ~+70	°C	$\leq +30^{\circ}\text{C}@ \leq 6$ months $\leq +45^{\circ}\text{C}@ \leq 3$ months $> 45^{\circ}\text{C}@ \leq 1$ month
4	relative humidity	5 ~95	%	No condensation , battery system normally working
5	height	4000	m	if altitude above 2000m, the max working temperature decrease $1^{\circ}\text{C}$ every 200m.can't higher than 4000m
6	environment	Using in no electric conduction dust and corrode gas place		

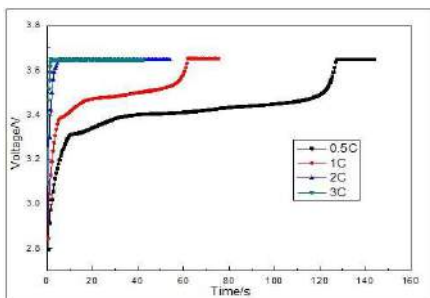
**SDA 10-2450 LFP battery panel instruction:**



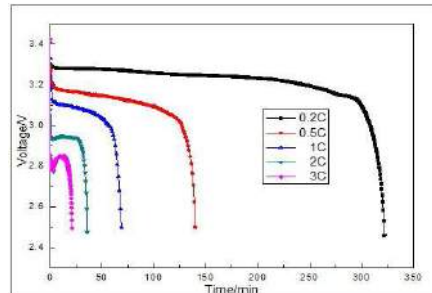
- 1 – power interface
- 2 – “RESET” and “POWER” key
- 3 – Cascading Telecommunication(RS485)
- 4 – Up-link communication(RS232)
- 5 – Address Dial Number(ADD)
- 6 – Run light, indicate system operation state
- 7 – Alarm light(ALM)
- 8 – battery capacity light(SOC)

**Performance Curve:**

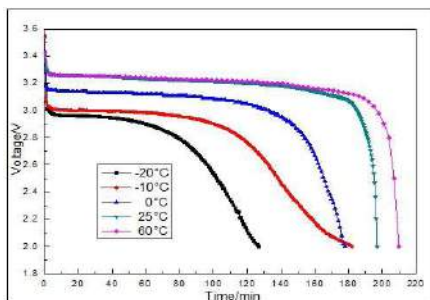
Single cell charge curve@25°C



Single cell discharge curve@25°C



Discharge capacity at different temperature



LFP battery discharge cycle at 0.5CA(100%DOD)

