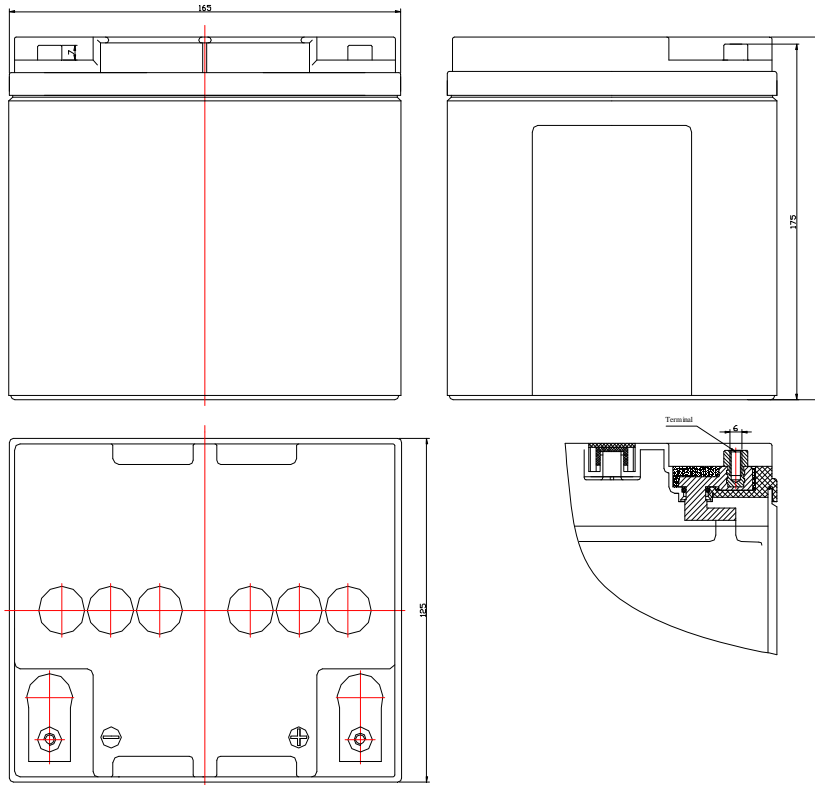


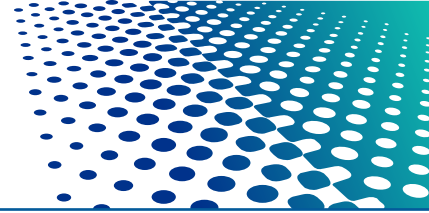
IE6-GFM-24 Series is a high -capacity battery. With easy usage and maintenance, it is intended for service in telecom system, UPS, and security system, etc.

The design life of the IE6-GFM-24 is 10 years.

## IE6-GFM-24



Normal Voltage	12V
Capacity	24 Ah @ 10hr to 1.80V per cell @ 25°C
Weight	Approx. 9kg (19.8 lbs)
Internal Resistance (full charged)	Approx. 11.3m Ω @ 25°C
Maximum Discharge Current	148A (5sec)
Self Discharge @ 25°C	Less than 8 % after 90 days storage
Operating Temperature Range	Discharge: -40°C ~ 50°C Charge: -20°C ~ 45°C Storage: -20°C ~ 40°C
Recommended Operating Temperature	15°C ~ 25°C
Maximum Charging Current Limited	4.8A
Charging Voltage @ 25°C	Float: 2.25 V/cell, Temps coefficient -3 mV/°C Cycle: 2.35 V/cell
Contain Materials	ABS
Terminal	M6 and HPb59- T <sub>1</sub>
Capacity Affected by Temperature	105 % @ 40°C 85 % @ 0°C 60 % @ -20°C



# IE6-GFM-24

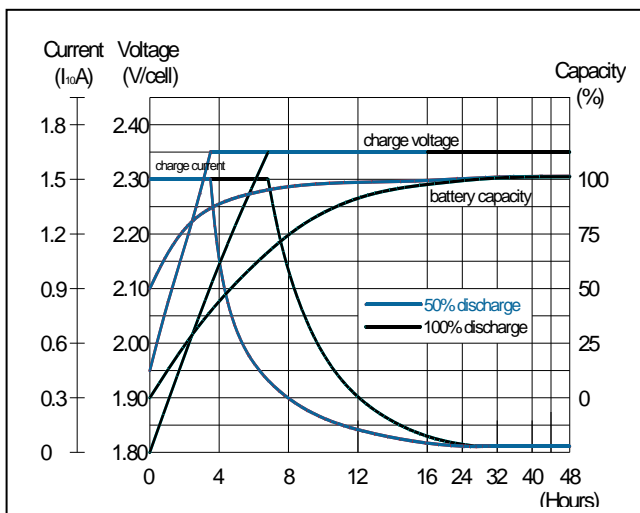
Constant Current Discharge Characteristics Unit: A (25°C)

F.V/Time	15min	30min	1hr	2hr	3hr	4hr	5hr	6hr	8hr	10hr
1.90V/cell	23.0	17.8	11.4	8.1	6.3	4.9	4.2	3.5	2.8	2.4
1.85V/cell	27.8	20.3	12.1	8.6	6.5	5.0	4.3	3.7	2.8	2.5
1.80V/cell	32.3	22.0	13.0	8.7	6.6	5.1	4.3	3.7	3.0	2.6
1.75V/cell	34.9	23.2	13.2	8.8	6.7	5.2	4.4	3.8	3.0	2.7
1.70V/cell	36.8	24.6	13.7	8.9	6.8	5.2	4.4	3.8	3.0	2.8
1.65V/cell	38.4	25.4	14.1	9.2	6.9	5.2	4.5	3.8	3.1	2.9

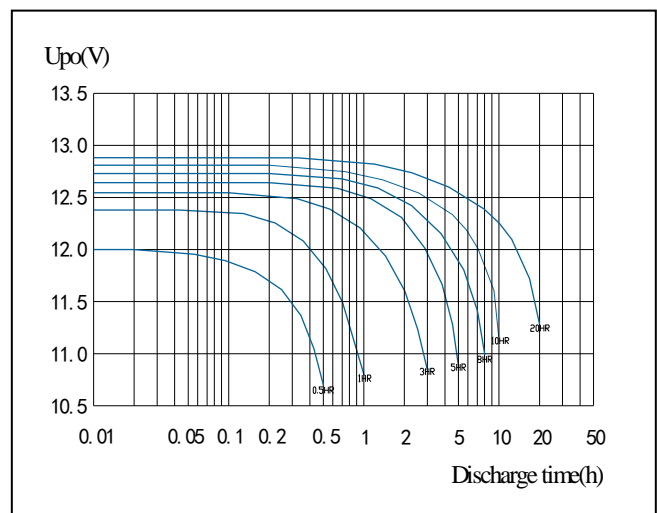
Constant Power Discharge Characteristics Unit: W/cell (25°C)

F.V/Time	15min	30min	1hr	2hr	3hr	4hr	5hr	6hr	8hr	10hr
1.90V/cell	44.1	34.5	22.4	16.0	12.6	9.9	8.6	7.1	5.6	5.0
1.85V/cell	52.3	38.6	23.3	16.7	12.9	10.0	8.6	7.4	5.7	5.0
1.80V/cell	59.9	40.8	24.7	16.9	13.0	10.1	8.7	7.5	5.9	5.2
1.75V/cell	63.5	42.7	24.9	17.0	13.1	10.2	8.7	7.5	5.9	5.4
1.70V/cell	65.3	44.5	25.4	17.1	13.2	10.3	8.8	7.6	6.0	5.6
1.65V/cell	66.2	45.5	25.9	17.5	13.5	10.3	8.9	7.6	6.1	5.8

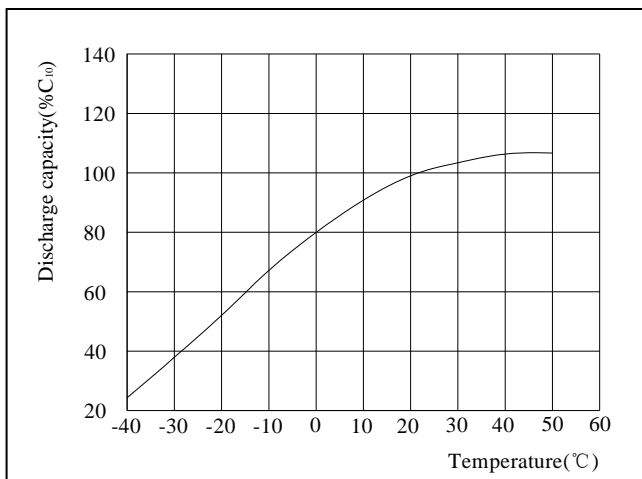
Constant Voltage Charge Characteristics



Discharge Performance at Different Discharge Rate



Capacity at Different Temperature



Curve of Storage Time and Self-discharge at Different Temperature

