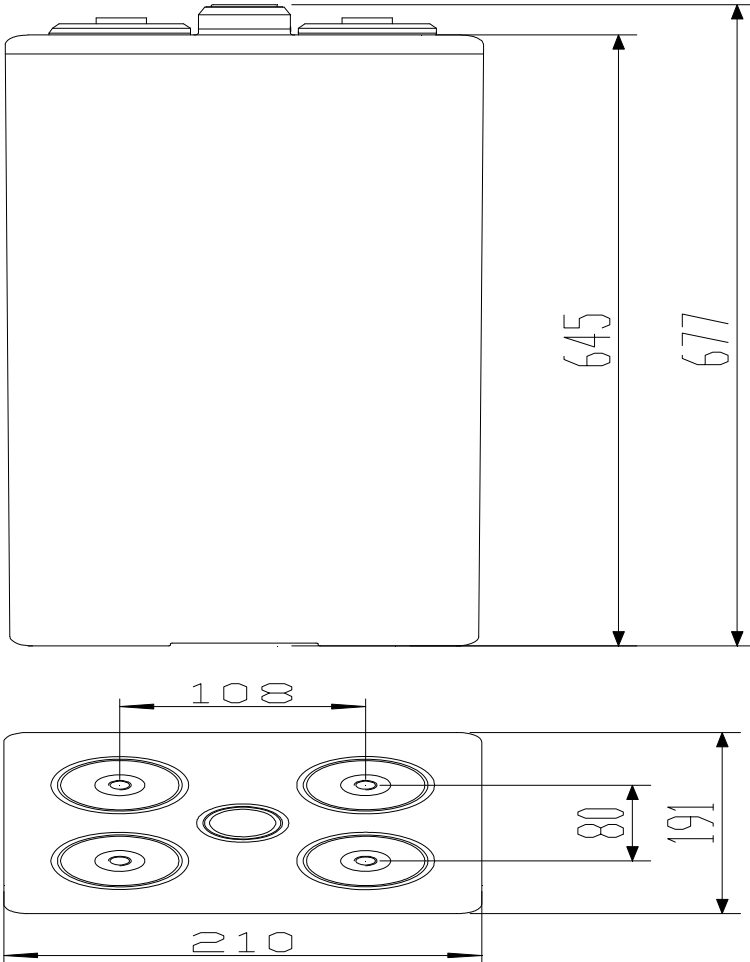


# GFMJ-800

(8 OPzV 800)



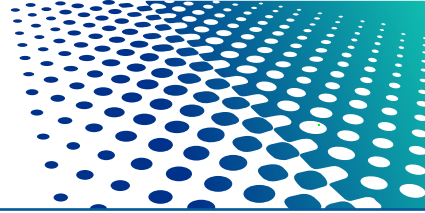
### Features

- VRLA gel battery with ABS case
- Design life 20 years
- Cyclic and standby duty
- High cycle service life
- Good temperature resistance performance
- Excellent deep cycle performance
- Superior low current discharge performance
- Tubular type positive plate
- PVC- SiO<sub>2</sub> separator
- Double sealed copper core lead terminals
- Reliable opening and closing safety valve

### Dimensions

- 210 x 191 x 677mm H

Rated voltage	2 V
Capacity@ 25°C	800Ah @ 10hr to 1.80V per cell
Weight	about 62kg ( 136.4 lb)
Reference internal resistance (charged)	About 0.32mΩ @ 25°C
Short-circuit current	About 6297A (0.1S reference value)
Max discharge current	2400A (5sec)
Self-discharge	< 20%/180 days @ 25°C
Temperature range	Application: -20°C ~ 50°C Storage: -20°C ~ 50°C Recommendation: 20°C ~ 30°C
Max charge current	160A
Charge voltage @ 25°C	Float charge: 2.23V, average charge: 2.35V Temperature compensation factor: -3 mV/°C
Terminal output	M10 copper terminal (HPb59-1)



# GFMJ-800 (8 OPzV 800)

Discharge current at different final voltages and different discharge rates unit: A (25°C)

	5min	10min	15min	30min	45min	1hr	1.5hr	2hr	3hr	4hr	5hr	8 hr	10 hr	20hr	100 hr	120hr
1.90	684	599	404	392	376	312	248	220	172	144	124	86	72	37.08	9.67	8.20
1.85	721	630	470	440	399	344	272	236	183	152	130	90	75	40.78	10.18	8.64
1.80	773	762	649	560	448	416	344	266	200	164	139	96	82	42.81	10.53	8.94
1.75	804	778	744	624	497	448	358	278	208	168	141	98	83	44.52	10.79	9.16

Discharge power at different final voltages and different discharge rates unit: W (25°C)

	5min	10min	15min	30min	45min	1hr	1.5hr	2hr	3hr	4hr	5hr	8 hr	10 hr	20hr	100 hr	120hr
1.90	1296	1123	740	654	616	578	489	400	329	278	239	174	150	79.1	19.3	16.4
1.85	1340	1170	852	739	675	611	531	451	368	308	265	190	164	85.7	20.1	17.1
1.80	1421	1402	1028	911	832	753	651	549	437	358	304	213	182	93.9	20.6	17.5
1.75	1470	1422	1185	1030	942	853	724	595	464	380	317	217	184	95.9	20.8	17.6

