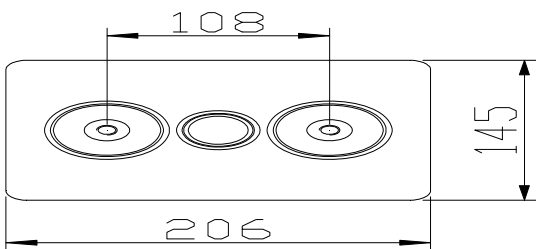
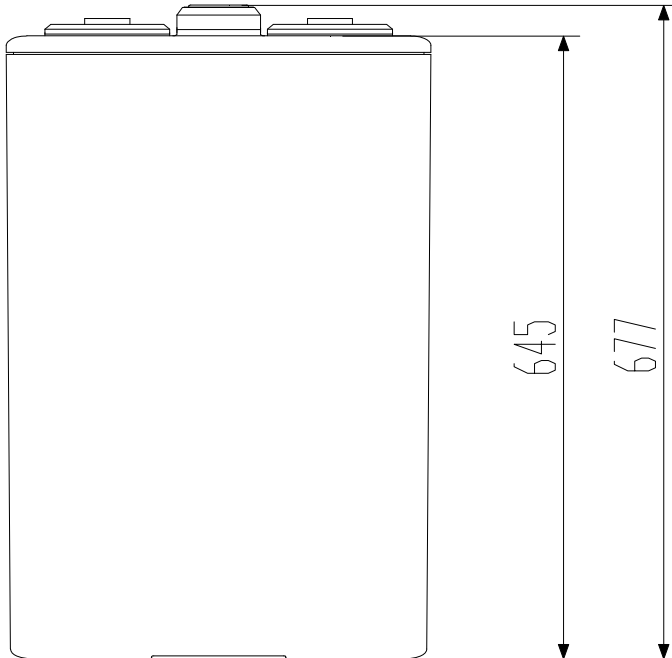


GFMJ-600

(6 OPzV 600)



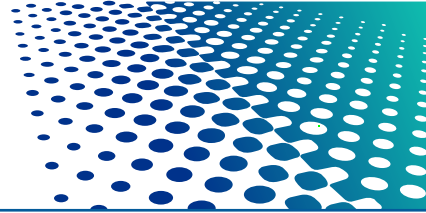
Features

- VRLA gel battery with ABS case
- Design life 20 years
- Cyclic and standby duty
- High cycle service life
- Good temperature resistance performance
- Excellent deep cycle performance
- Superior low current discharge performance
- Tubular type positive plate
- PVC- SiO₂ separator
- Double sealed copper core lead terminals
- Reliable opening and closing safety valve

Dimensions

- 206 x 145 x 677mm H

Rated voltage	2 V
Capacity@ 25°C	600Ah @ 10hr to 1.80V per cell
Weight	about 46.5kg (102.4 lb)
Reference internal resistance (charged)	About 0.35mΩ @ 25°C
Short-circuit current	About 5706A (0.1S reference value)
Max discharge current	1800A (5sec)
Self-discharge	< 20%/180 days @ 25°C
Temperature range	Application: -20°C ~ 50°C Storage: -20°C ~ 50°C Recommendation: 20°C ~ 30°C
Max charge current	120A
Charge voltage @ 25°C	Float charge: 2.23V, average charge: 2.35V Temperature compensation factor: -3 mV/°C
Terminal output	M10 copper terminal (HPb59-1)



GFMJ-600 (6 OPzV 600)

Discharge current at different final voltages and different discharge rates unit: A (25°C)

	5min	10min	15min	30min	45min	1hr	1.5hr	2hr	3hr	4hr	5hr	8 hr	10 hr	20hr	100 hr	120hr
1.90	513	449	303	294	282	234	186	165	129	108	93	65	54	28.08	7.41	6.21
1.85	541	472	353	330	299	258	204	177	137	114	98	67	56	30.88	7.80	6.54
1.80	580	572	487	420	336	312	258	199	150	123	104	72	61	32.42	8.07	6.76
1.75	603	583	558	468	373	338	274	208	156	126	106	73	62	33.71	8.27	6.93

Discharge power at different final voltages and different discharge rates unit: W (25°C)

	5min	10min	15min	30min	45min	1hr	1.5hr	2hr	3hr	4hr	5hr	8 hr	10 hr	20hr	100 hr	120hr
1.90	972	842	480	421	378	335	318	300	247	208	180	130	113	56.1	14.8	12.4
1.85	1005	877	538	488	460	432	386	339	277	230	199	142	122	61.1	15.4	12.9
1.80	1066	1052	771	683	624	564	488	411	328	269	227	161	136	68.5	15.8	13.2
1.75	1102	1067	888	772	706	639	543	447	347	284	237	163	137	69.0	15.9	13.3

