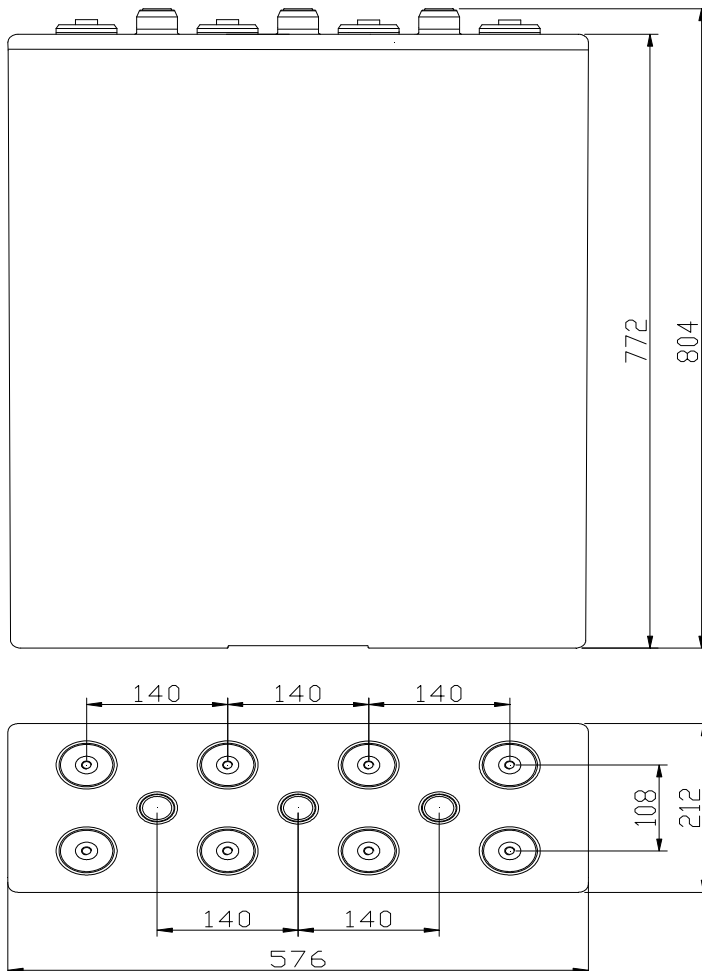


GFMJ-3000 (24 OPzV 3000)



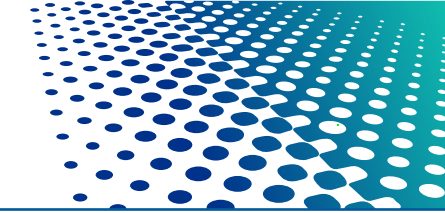
Features

- VRLA gel battery with ABS case
- Design life 20 years
- Cyclic and standby duty
- High cycle service life
- Good temperature resistance performance
- Excellent deep cycle performance
- Superior low current discharge performance
- Tubular type positive plate
- PVC- SiO₂ separator
- Double sealed copper core lead terminals
- Reliable opening and closing safety valve

Dimensions

- 576 x 212 x 804mm H

| | |
|---|---|
| Rated voltage | 2 V |
| Capacity@ 25°C | 3000Ah @ 10hr to 1.80V per cell |
| Weight | about 222kg (489.4 lb) |
| Reference internal resistance (charged) | About 0.21mΩ @ 25°C |
| Short-circuit current | About 9360A (0.1S reference value) |
| Max discharge current | 9000A (5sec) |
| Self-discharge | < 20%/180 days @ 25°C |
| Temperature range | Application: -20°C ~ 50°C Storage: -20°C ~ 50°C Recommendation: 20°C ~ 30°C |
| Max charge current | 600A |
| Charge voltage @ 25°C | Float charge: 2.23V, average charge: 2.35V Temperature compensation factor: -3 mV/°C |
| Terminal output | M10 copper terminal (HPb59-1) |



GFMJ-3000

(24 OPzV 3000)

Discharge current at different final voltages and different discharge rates unit: A (25°C)

| | 5min | 10min | 15min | 30min | 45min | 1hr | 1.5hr | 2hr | 3hr | 4hr | 5hr | 8 hr | 10 hr | 20hr | 100 hr | 120hr |
|------|------|-------|-------|-------|-------|------|-------|------|-----|-----|-----|------|-------|------|--------|-------|
| 1.90 | 2033 | 1805 | 1319 | 1200 | 1170 | 1044 | 930 | 780 | 614 | 497 | 423 | 308 | 255 | 136. | 35.6 | 30.2 |
| 1.85 | 2313 | 1900 | 1558 | 1440 | 1240 | 1188 | 1020 | 864 | 680 | 548 | 466 | 326 | 272 | 150. | 37.5 | 31.8 |
| 1.80 | 2423 | 2322 | 1996 | 1848 | 1525 | 1476 | 1290 | 1012 | 780 | 627 | 526 | 360 | 310 | 157. | 38.8 | 32.9 |
| 1.75 | 2623 | 2592 | 2376 | 2112 | 1799 | 1650 | 1419 | 1080 | 816 | 653 | 544 | 370 | 315 | 164. | 39.7 | 33.7 |

Discharge power at different final voltages and different discharge rates unit: W (25°C)

| | 5min | 10min | 15min | 30min | 45min | 1hr | 1.5hr | 2hr | 3hr | 4hr | 5hr | 8 hr | 10 hr | 20hr | 100 hr | 120hr |
|------|------|-------|-------|-------|-------|------|-------|------|------|------|------|------|-------|------|--------|-------|
| 1.90 | 4212 | 3564 | 1697 | 1603 | 1559 | 1515 | 1412 | 1309 | 1087 | 933 | 811 | 588 | 509 | 273. | 71.2 | 60.4 |
| 1.85 | 4477 | 3712 | 2332 | 2039 | 1911 | 1782 | 1635 | 1487 | 1223 | 1032 | 893 | 640 | 550 | 297. | 74.2 | 62.9 |
| 1.80 | 4635 | 4450 | 3144 | 2903 | 2684 | 2465 | 2156 | 1846 | 1485 | 1224 | 1036 | 731 | 615 | 309. | 76.0 | 64.5 |
| 1.75 | 4794 | 4739 | 3680 | 3308 | 3031 | 2753 | 2402 | 2050 | 1607 | 1292 | 1075 | 731 | 615 | 316. | 76.7 | 65.1 |

