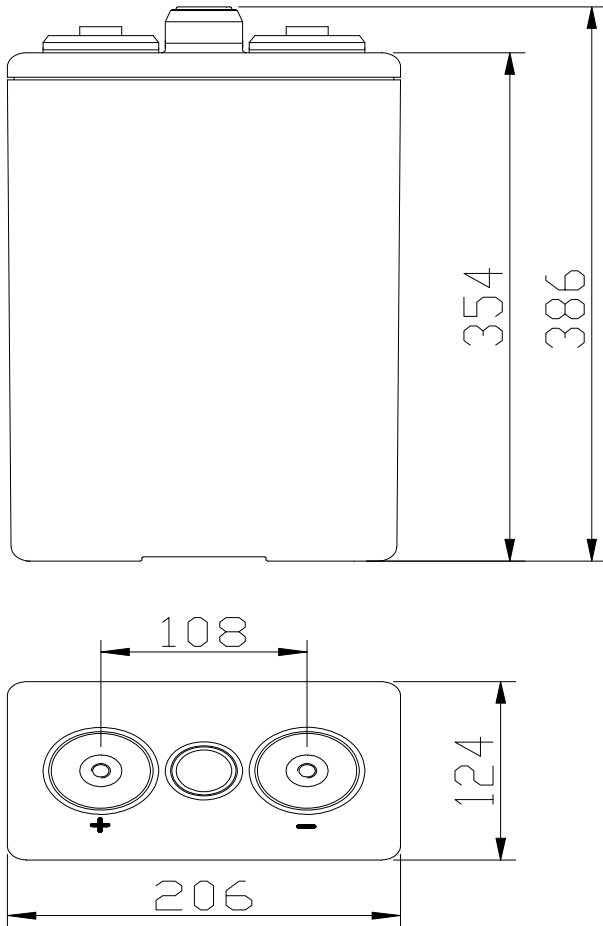


GFMJ-250

(5 OPzV 250)



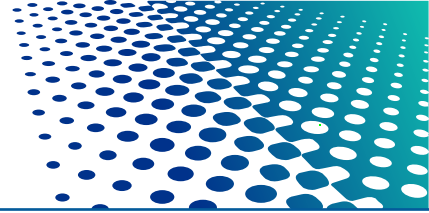
Features

- VRLA gel battery with ABS case
- Design life 20 years
- Cyclic and standby duty
- High cycle service life
- Good temperature resistance performance
- Excellent deep cycle performance
- Superior low current discharge performance
- Tubular type positive plate
- PVC- SiO₂ separator
- Double sealed copper core lead terminals
- Reliable opening and closing safety valve

Dimensions

- 206 x 124 x 386mm H

Rated voltage	2 V
Capacity@ 25°C	250Ah @ 10hr to 1.80V per cell
Weight	about 21.5kg (47.3 lb)
Reference internal resistance (charged)	About 0.62mΩ @ 25°C
Short-circuit current	About 3215A (0.1S reference value)
Max discharge current	750A (5sec)
Self-discharge	< 20%/180 days @ 25°C
Temperature range	Application: -20°C ~ 50°C Storage: -20°C ~ 50°C Recommendation: 20°C ~ 30°C
Max charge current	40A
Charge voltage @ 25°C	Float charge: 2.23V, average charge: 2.35V Temperature compensation factor: -3 mV/°C
Terminal output	M10 copper terminal (HPb59-1)



GFMJ-250 (5 OPzV 250)

Discharge current at different final voltages and different discharge rates unit: A (25°C)

	5min	10min	15min	30min	45min	1hr	1.5hr	2hr	3hr	4hr	5hr	8 hr	10 hr	20hr	100 hr	120hr
1.90	228	193	184	147	130	111	86	72	54	43	38	26	22	11.71	3.07	2.59
1.85	306	248	224	173	139	125	94	74	57	47	39	27	23	12.88	3.24	2.73
1.80	315	285	266	202	164	131	115	87	65	49	42	29	26	13.52	3.36	2.83
1.75	338	317	298	216	179	138	120	90	68	50	43	32	27	14.06	3.47	2.92

Discharge power at different final voltages and different discharge rates unit: W (25°C)

	5min	10min	15min	30min	45min	1hr	1.5hr	2hr	3hr	4hr	5hr	8 hr	10 hr	20hr	100 hr	120hr
1.90	450	378	301	267	238	208	171	134	104	84	73	51	43	23.4	6.14	5.18
1.85	464	394	337	296	265	233	190	147	113	93	79	56	47	25.5	6.42	5.41
1.80	483	472	429	349	305	261	217	172	131	107	90	63	52	26.5	6.59	5.55
1.75	533	521	487	388	335	282	232	181	135	110	91	65	53	27.1	6.70	5.64

