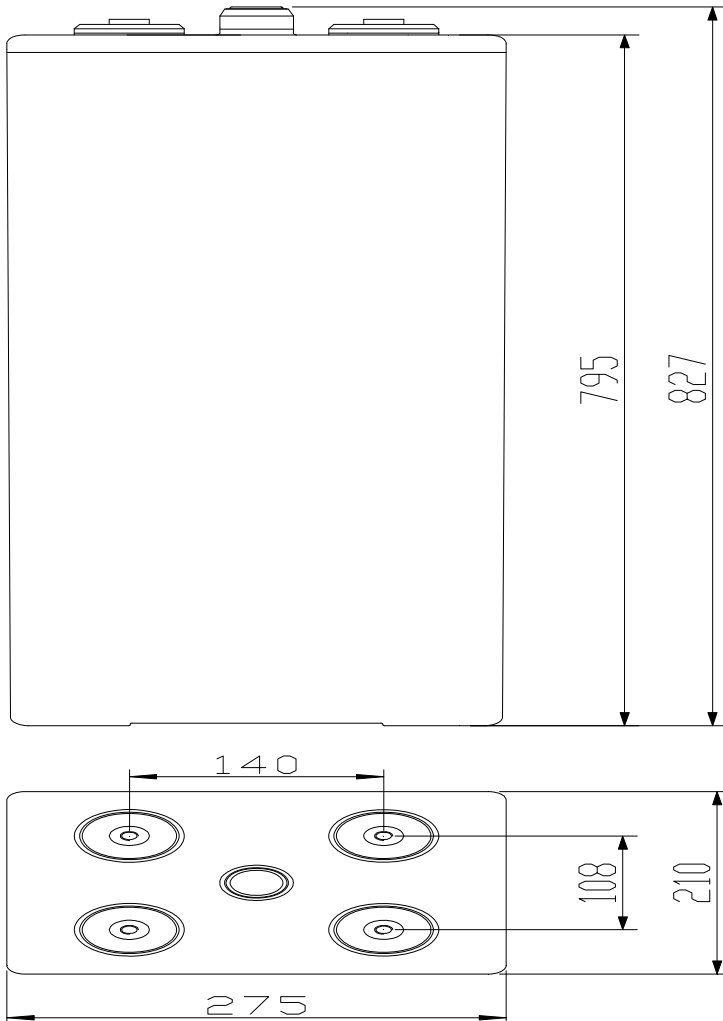


GFMJ-1500B

(12 OPzV 1500B)



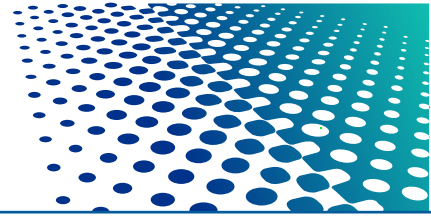
Features

- VRLA gel battery with ABS case
- Design life 20 years
- Cyclic and standby duty
- High cycle service life
- Good temperature resistance performance
- Excellent deep cycle performance
- Superior low current discharge performance
- Tubular type positive plate
- PVC- SiO₂ separator
- Double sealed copper core lead terminals
- Reliable opening and closing safety valve

Dimensions

- 275 x 210 x 827mm H

Rated voltage	2 V
Capacity@ 25°C	1500Ah @ 10hr to 1.80V per cell
Weight	about 110.6kg (243.3 lb)
Reference internal resistance (charged)	About 0.23mΩ@ 25°C
Short-circuit current	About 8541A (0.1S reference value)
Max discharge current	4500A (5sec)
Self-discharge	< 20%/180 days @ 25°C
Temperature range	Application: -20°C ~ 50°C Storage: -20°C ~ 50°C Recommendation: 20°C ~ 30°C
Max charge current	300A
Charge voltage @ 25°C	Float charge: 2.23V, average charge: 2.35V Temperature compensation factor: -3 mV/°C
Terminal output	M10 copper terminal (HPb59-1)



GFMJ-1500B

(12 OPzV 1500B)

Discharge current at different final voltages and different discharge rates unit: A (25°C)

	5min	10min	15min	30min	45min	1hr	1.5hr	2hr	3hr	4hr	5hr	8 hr	10 hr	20hr	100 hr	120hr
1.90	1112	950	631	600	585	522	465	390	308	249	212	154	128	68.29	17.76	15.10
1.85	1205	1000	764	720	620	594	510	432	340	274	233	163	136	75.1	18.7	15.9
1.80	1260	1210	998	924	762	738	645	507	390	314	263	180	155	78.8	19.3	16.4
1.75	1311	1296	1188	1056	900	825	710	540	403	326	272	185	158	82.0	19.8	16.8

Discharge power at different final voltages and different discharge rates unit: W (25°C)

	5min	10min	15min	30min	45min	1hr	1.5hr	2hr	3hr	4hr	5hr	8 hr	10 hr	20hr	100 hr	120hr
1.90	2106	1782	866	804	776	747	701	655	545	466	405	294	254	136.	35.5	30.2
1.85	2239	1856	1003	887	837	786	765	744	612	517	447	320	275	148.	37.0	31.4
1.80	2318	2225	1571	1450	1341	1232	1078	924	742	612	519	367	306	154.	37.9	32.2
1.75	2397	2370	1840	1653	1515	1376	1201	1025	803	645	537	367	306	158.	38.2	32.5

