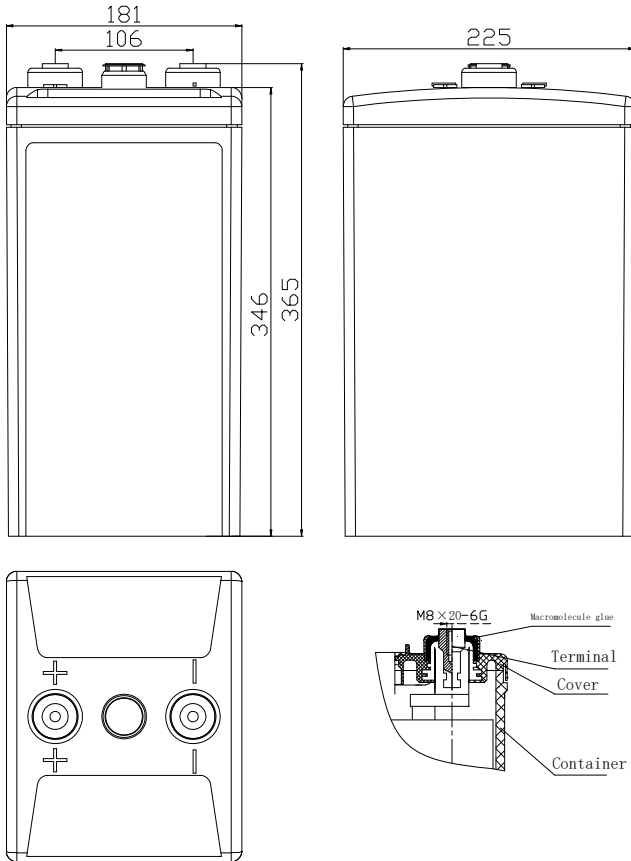
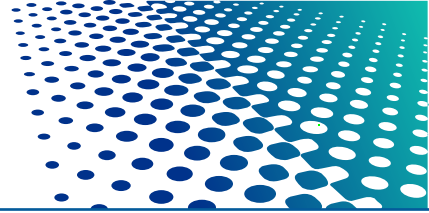


Valve-regulated Lead Acid Batteries GFM series are widely utilized as standby power supply for communication and signal system such as telecommunication, mobile station, and railway etc., backup power supply for UPS and emergency illumination. The design life of the GFM-600 is 15 years.

## GFM-600



Normal Voltage	2V
Capacity	600 Ah @ 10hr to 1.80V per cell @ 25°C
Weight	Approx. 35 kg (77 lbs)
Internal Resistance (full charged)	Approx. 0.39m Ω @ 25°C
Maximum Discharge Current	3720A (5sec)
Self Discharge @ 25°C	No more than 3 % after 30 days storage
Operating Temperature Range	Discharge: -40°C ~ 50°C Charge: -20°C ~ 45°C Storage: -20°C ~ 40°C
Recommended Operating Temperature	15°C ~ 25°C
Maximum Charging Current Limited	120A
Charging Voltage @ 25°C	Float: 2.23 V, Temps coefficient -3 mV/°C Cycle: 2.35 V
Contain Materials	ABS
Terminal	M8 and HPb59-1



# GFM-600

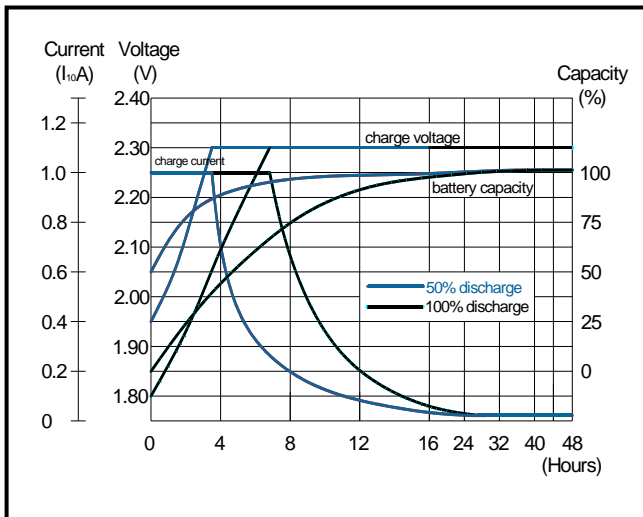
Constant Current Discharge Characteristics Unit: A (25°C)

F.V/Time	1h	1.5h	2h	3h	4h	5h	6h	8h	10h
1.90V	259	215	173	129.2	108.7	89.4	76.5	65.7	53.6
1.85V	309	244	185	142.5	116.3	97.1	82.4	69.8	58.1
1.80V	330	252	196	150.9	121.2	102.9	90.2	71.8	60.3
1.75V	350	263	205	154.7	123.1	104.8	92.2	73.3	61.2
1.70V	365	275	212	158.5	125.0	105.8	93.1	73.8	61.7
1.65V	374	281	217	159.4	126.0	106.7	94.1	74.1	61.9

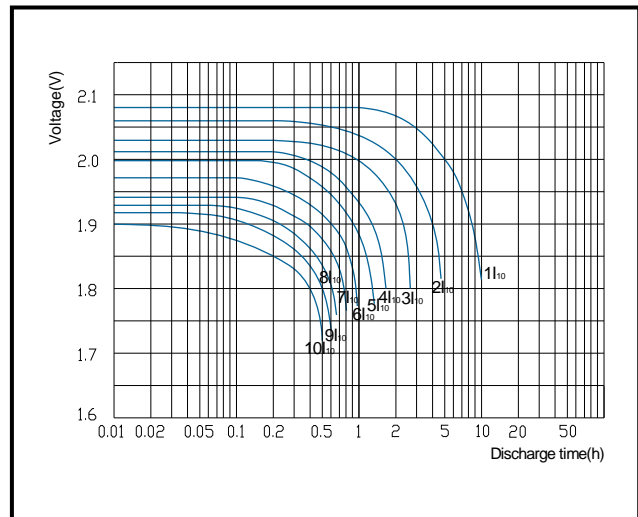
Constant Power Discharge Characteristics Unit: W/cell (25°C)

F.V/Time	1h	1.5h	2h	3h	4h	5h	6h	8h	10h
1.90V	508	424	343	259.4	219.2	180.2	155.3	133.2	109.0
1.85V	597	475	362	282.1	232.7	194.5	166.3	140.4	117.1
1.80V	628	486	381	297.2	240.4	204.7	181.0	143.9	121.0
1.75V	659	505	396	303.8	244.2	207.9	183.9	146.4	122.3
1.70V	678	522	406	308.5	248.1	210.2	185.7	147.3	123.4
1.65V	687	528	413	310.4	249.0	211.2	186.7	147.7	123.7

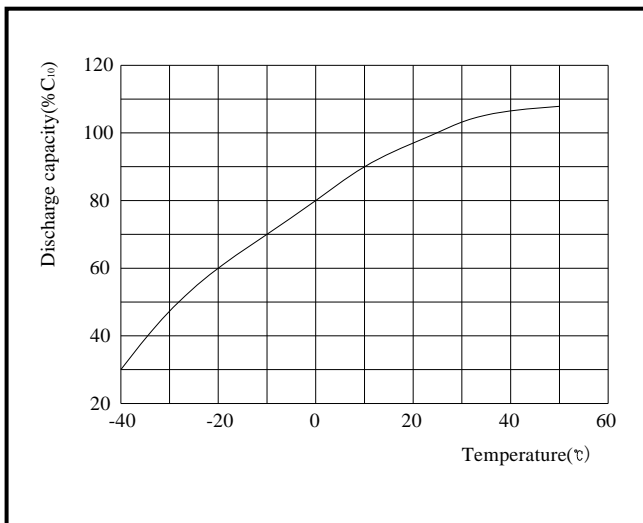
Constant Voltage Charge Characteristics



Discharge Performance at Different Discharge Rate



Capacity at Different Temperature



Curve of Storage Time and Self-discharge at Different Temperature

