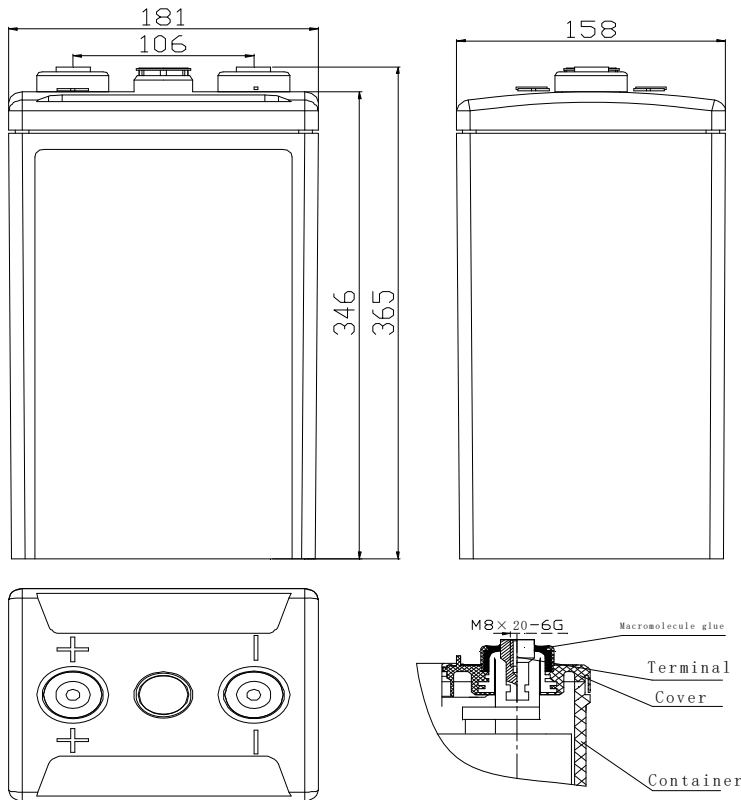


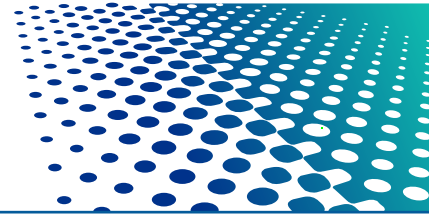
Valve-regulated Lead Acid Batteries GFM series are widely utilized as standby power supply for communication and signal system such as telecommunication, mobile station, and railway etc., backup power supply for UPS and emergency illumination.

The design life of the GFM-400 is 15 years.

## GFM-400



Normal Voltage	2V
Capacity	400 Ah @ 10hr to 1.80V per cell @ 25°C
Weight	Approx. 24 kg (52.8 lbs)
Internal Resistance (full charged)	Approx. 0.51m Ω @ 25°C
Maximum Discharge Current	2480A (5sec)
Self Discharge @ 25°C	No more than 3 % after 30 days storage
Operating Temperature Range	Discharge: -40°C ~ 50°C Charge: -20°C ~ 45°C Storage: -20°C ~ 40°C
Recommended Operating Temperature	15°C ~ 25°C
Maximum Charging Current Limited	80A
Charging Voltage @ 25°C	Float: 2.23 V, Temps coefficient -3 mV/°C Cycle: 2.35 V
Contain Materials	ABS
Terminal	M8 and HPb59-1



# GFM-400

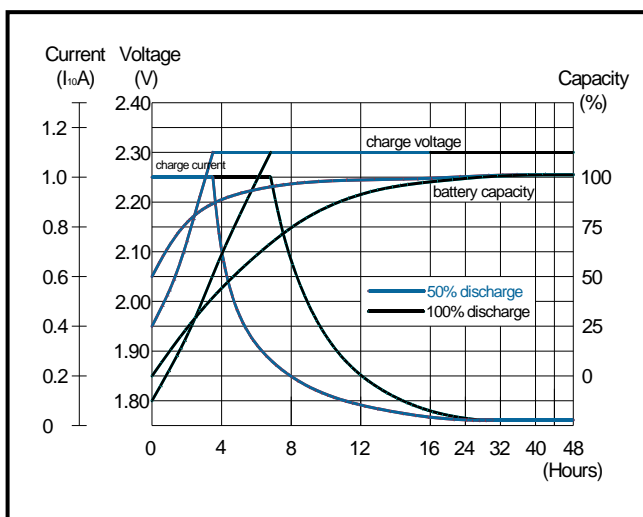
Constant Current Discharge Characteristics Unit: A (25°C)

F.V/Time	1h	1.5h	2h	3h	4h	5h	6h	8h	10h
1.90V	172	144	116	85.8	72.1	59.4	51.2	43.9	35.7
1.85V	206	163	123	95.3	77.9	64.6	55.1	46.5	38.7
1.80V	219	168	131	100.9	80.8	68.4	60.2	47.8	40.2
1.75V	233	176	137	103.8	82.7	69.6	61.4	48.8	40.8
1.70V	244	183	142	105.7	83.7	70.6	62.2	49.2	41.2
1.65V	250	187	145	106.6	84.6	71.0	62.5	49.4	41.4

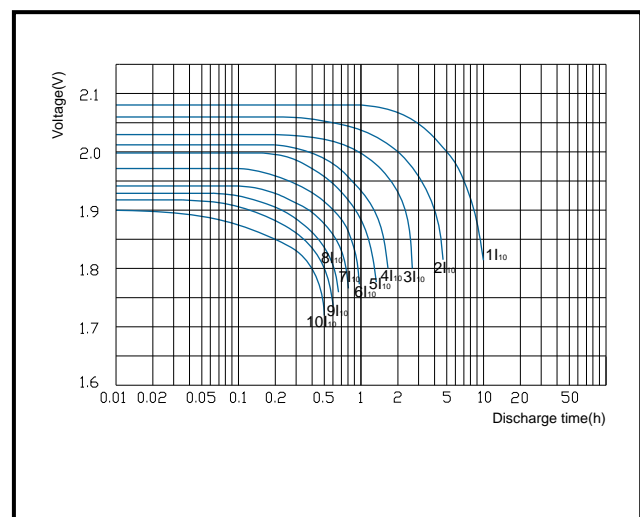
Constant Power Discharge Characteristics Unit: W/cell (25°C)

F.V/Time	1h	1.5h	2h	3h	4h	5h	6h	8h	10h
1.90V	339	282	228	172.8	146.3	120.1	103.5	88.8	72.7
1.85V	398	317	242	188.3	155.2	129.6	110.8	93.6	78.1
1.80V	419	324	254	198.0	160.2	136.4	120.7	95.9	80.7
1.75V	440	336	264	202.4	162.9	138.6	122.6	97.6	81.6
1.70V	452	348	271	205.4	165.1	140.1	123.8	98.2	82.2
1.65V	458	352	275	206.6	166.2	140.8	124.4	98.5	82.5

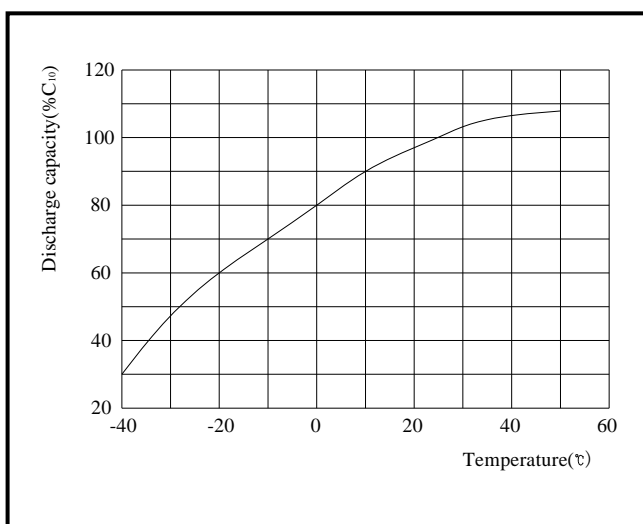
Constant Voltage Charge Characteristics



Discharge Performance at Different Discharge Rate



Capacity at Different Temperature



Curve of Storage Time and Self-discharge at Different Temperature

