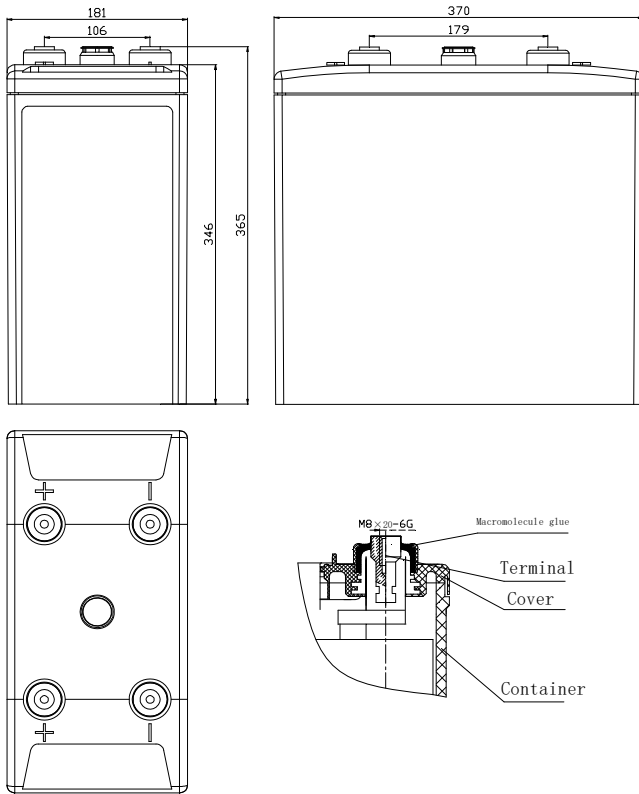


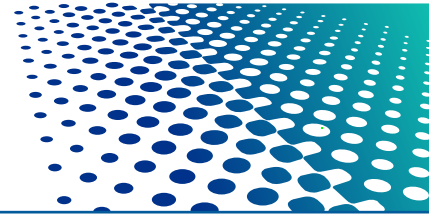
Valve-regulated Lead Acid Batteries GFM series are widely utilized as standby power supply for communication and signal system such as telecommunication, mobile station, and railway etc., backup power supply for UPS and emergency illumination.

The design life of the GFM-1000 is 15 years.

GFM-1000



Normal Voltage	2V
Capacity	1000 Ah @ 10hr to 1.80V per cell @ 25°C
Weight	Approx. 59 kg (129.8 lbs)
Internal Resistance (full charged)	Approx. 0.36m Ω @ 25°C
Maximum Discharge Current	6200A (5sec)
Self Discharge @ 25°C	No more than 3 % after 30 days storage
Operating Temperature Range	Discharge: -40°C ~ 50°C Charge: -20°C ~ 45°C Storage: -20°C ~ 40°C
Recommended Operating Temperature	15°C ~ 25°C
Maximum Charging Current Limited	200A
Charging Voltage @ 25°C	Float: 2.23 V, Temps coefficient -3 mV/°C Cycle: 2.35 V
Contain Materials	ABS
Terminal	M8 and HPb59-1



GFM-1000

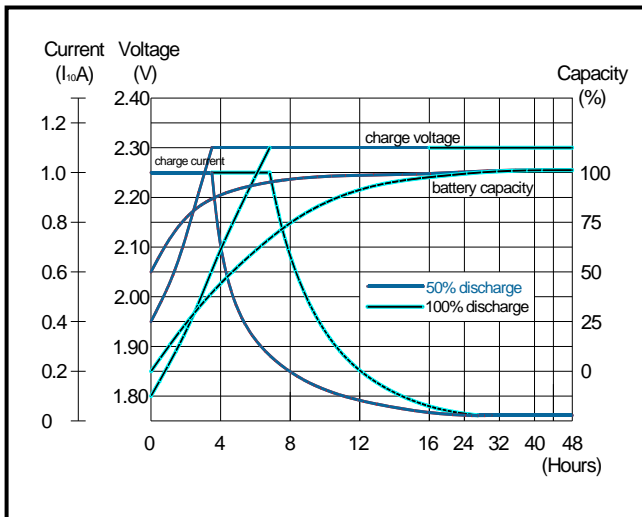
Constant Current Discharge Characteristics Unit: A (25°C)

F.V/Time	1h	1.5h	2h	3h	4h	5h	6h	8h	10h
1.90V	431	358	288	215.1	181.7	149.0	127.5	109.9	89.3
1.85V	516	406	309	236.8	194.2	161.5	138.2	115.8	97.1
1.80V	549	419	327	251.9	201.0	171.2	151.0	119.8	101.0
1.75V	583	439	342	258.5	205.8	174.0	152.9	121.8	101.9
1.70V	608	458	353	263.2	208.7	176.0	154.9	122.8	102.9
1.65V	624	468	361	266.0	210.6	176.9	155.9	123.8	102.9

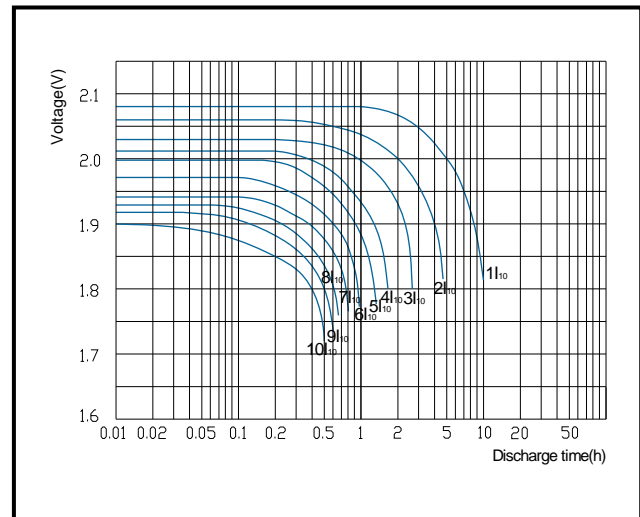
Constant Power Discharge Characteristics Unit: W/cell (25°C)

F.V/Time	1h	1.5h	2h	3h	4h	5h	6h	8h	10h
1.90V	847	706	571	432.1	366.3	300.0	258.8	221.9	181.7
1.85V	995	792	604	470.8	387.5	324.0	277.5	234.0	195.0
1.80V	1045	809	635	495.3	401.0	341.3	302.0	239.8	201.7
1.75V	1099	842	660	505.7	407.7	346.2	306.9	244.1	203.9
1.70V	1130	870	677	513.2	412.5	350.0	309.8	245.6	205.6
1.65V	1145	880	687	517.0	415.4	351.9	310.8	246.2	206.2

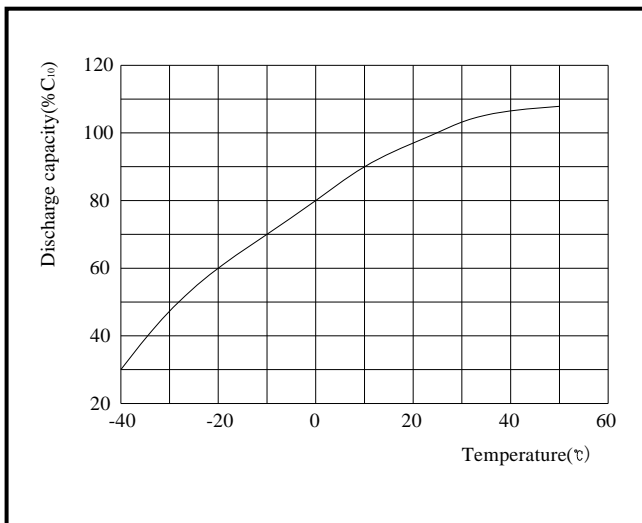
Constant Voltage Charge Characteristics



Discharge Performance at Different Discharge Rate



Capacity at Different Temperature



Curve of Storage Time and Self-discharge at Different Temperature

